



2008/09
ANNUAL REPORT

**WE CAN
EXPLAIN**



ASTC SCIENCE WORLD SOCIETY

SCIENCE
WORLD
BRITISH COLUMBIA



SCIENCE WORLD
ENCOURAGES VISITORS
TO EXPLORE, DISCOVER
AND IMAGINE AS WE
EXPLAIN THE SCIENCE
BEHIND BOTH ORDINARY
AND EXTRAORDINARY
THINGS ALL AROUND
US. SO HOW WAS
SCIENCE WORLD'S
2008/2009 YEAR?
INSPIRING.
WE CAN EXPLAIN...

Visitors

(includes 188,957
Community Outreach
participants)

747,041

Members

37,047

Volunteer
Hours

32,379

Volunteers

340

14

Science Theatre Shows

12

OMNIMAX® films

6

Feature Exhibitions



WE CAN EXPLAIN

With Our Report from the Chair

Looking back on my second year as Chair of Science World's Board of Directors, I'm excited by the strides we have made and the relationships we have developed, both in our local community and across the province.

This year, the B.C. provincial government was a great supporter of our mission. The Province contributed \$10.5 million towards the capital campaign for the restoration of our False Creek facility and the creation of the Outdoor Science Experience. This generous gift is critical to ensuring the continued success of Science World at TELUS World of Science. In addition, the government provided support for other mutual priorities that we are proud to have launched in partnership with them, including *Big Science for Little Hands*, *BC Green Games* and the *Climate Action Initiative*.

In 2008/2009 we also realized significant advances on two strategic initiatives with major impact on the future of our organization. First, we began the process of master planning for the False Creek site that will help shape what Science World's facility will look like for years down the road. Second, we commenced a strategic exploration of the most appropriate role for Science World in science promotion across the province.

I'd like to thank the Science World Board, volunteers and staff for their continued commitment as we launch into celebrating our twentieth year under the dome. I'm sure we have a great year ahead of us.



Paul Geyer
Chair, Board of Directors

With Our Report from the President & CEO

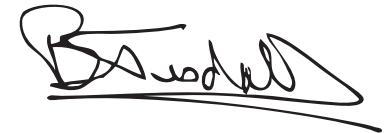
Another fine year for Science World! In 2008/2009, we welcomed 558,084 visitors to Science World at TELUS World of Science and 188,957 participants in our Community Outreach programs. This strong attendance resulted in a budget surplus which will contribute to Science World's long-term financial stability.

We were pleased to bring in a number of appealing feature exhibitions this year. We are particularly pleased that several of these exhibitions resulted from valuable community partnerships: with Maynards for *Fossils, Fins and Fangs: Dinosaurs and Other Ancient Life*; with the Vancouver LEGO® Club in *Wheels, Wings and Waves—A LEGO® World of Transportation*; and with the Czech Republic for *Orbis Pictus*.

This year, there has been an increase in the number of events for teens and adults at Science World at TELUS World of Science, such as *Opening the Door* and *Science World After Dark*. A highlight during the year was a visit from Jane Goodall in October, attracting students involved with her Roots & Shoots youth leadership program.

Our Community Outreach programs continued to expand our reach across the community and around the province this year. The BC PALS initiative (British Columbia Program for the Awareness and Learning of Science) has been a real success in involving elementary school students in science activity, thanks to the support of the Provincial Government through the Ministry of Education. *On The Road* trips are increasingly popular in schools throughout British Columbia, the number of *Community Science Celebrations* continues to grow (five this year), and we successfully launched the *Big Science for Little Hands* program.

I would like to thank the Board for their dedicated leadership and our Members for their wonderful support—and of course our enthusiastic team, staff and volunteers alike, for delivering on the Mission. We are all looking forward to further exciting times in the year ahead.



Bryan Tisdall
President & CEO



With Our Financial Highlights

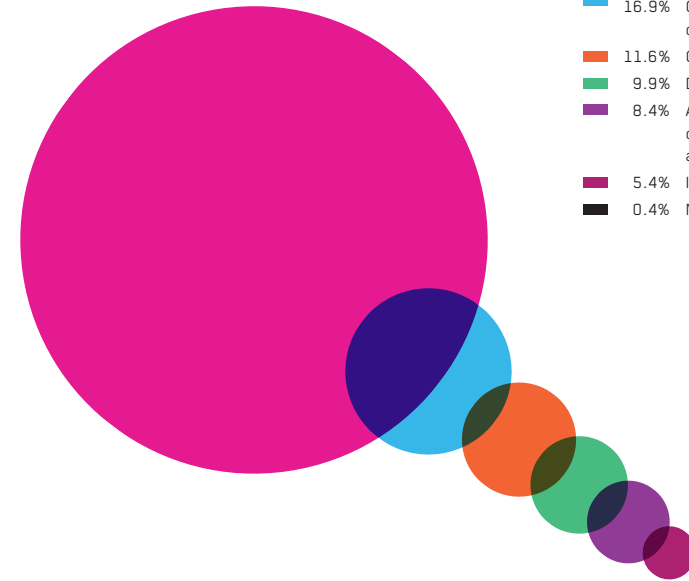
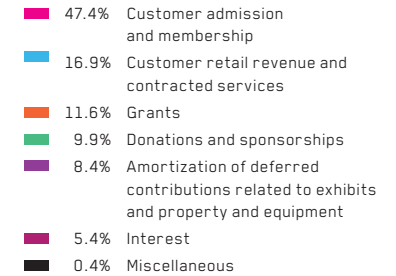
FINANCIAL SUMMARY

The financial statements of A.S.T.C. Science World Society for the year ended February 28, 2009 have been audited by Pricewaterhouse Coopers LLP, Chartered Accountants. These financial statements are available upon request. The tables below show revenues and expenditures relative to fiscal years 2007/2008 and 2006/2007. They are an illustrative summary only and are not intended to replace the full audited financial statements.

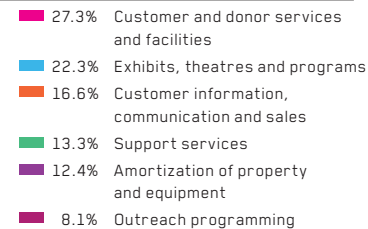
Statement of Operations Extracted from the Financial Statements for the year ended February 28, 2009 (in thousands of dollars)

	Year Ended February 28 2009	Year Ended February 29 2008	Year Ended February 28 2007
REVENUES			
Customer admission and memberships	5,222	4,666	6,995
Customer retail revenue and contracted services	1,859	1,677	1,954
Grants	1,278	1,166	1,090
Donations and sponsorships	1,084	1,265	1,278
Interest	339	430	337
Interest on contribution from Province of British Columbia	256	—	—
Miscellaneous	40	148	58
	10,078	9,352	11,712
EXPENDITURES			
Customer and donor services and facilities	2,725	2,499	2,707
Exhibits, theatres and programs	2,233	2,059	2,280
Customer information, communication and sales	1,664	1,601	1,686
Support services	1,328	1,221	1,316
Outreach programming	801	721	717
	8,751	8,101	8,706
EXCESS OF REVENUES OVER EXPENSES BEFORE AMORTIZATION			
	1,327	1,251	3,006
Amortization of exhibits and property and equipment	(1,243)	(1,616)	(1,378)
Amortization of deferred contributions related to exhibits and property and equipment	919	1,154	1,190
	(324)	(462)	(188)
EXCESS OF REVENUES OVER EXPENSES			
	1,003	789	2,818

FISCAL 2008-2009 REVENUES



FISCAL 2008-2009 EXPENDITURES



WE CAN EXPLAIN

With Our 2008/2009 Board of Directors

OFFICERS

Chair
Paul Geyer

Vice Chairs
Andrew Harries
Dr. Robin Louis

Treasurer
Jim Pickles
Wanda Costuros
(until January 2009)

Secretary
Donna O'Neill

Past Chair
Morgan Sturdy

Honorary Past Chair
Dr. Ken Spencer

MEMBERS

Abdul Ladha
Bev Van Ruyven
Dr. Bruce Beairsto
Bruce Drake
Bruce McLeod
Garry Rasmussen
Keith Spencer
Kerry Peacock (until September 2008)
Dr. Lindsay Machan
Peggie Terry
Peter O'Callaghan
Rich Simons
Robert Fung (until December 2008)
Ross Mitchell (until December 2008)
Stephen Lewis (appointed September 2008)
Stewart Ladyman
Walter Segsworth (appointed September 2008)



You lose 10,000 brain cells a day.

We can explain.
learn more at
scienceworld.ca

WE CAN EXPLAIN

With Our Feature Exhibitions

2008/2009 saw Science World bring in a remarkable six feature exhibitions to encourage visitors to explore the wonders of science—sometimes in unconventional ways.

PLANET OZ—WALK ON AUSTRALIA'S WILD SIDE

Visitors discovered Down Under as they walked through Australian ecosystems and explored some of the world's most amazing creatures—how they adapt to their natural environment, what they eat, how they live and how they continue to survive today. From cute and cuddly koalas and wallabies to the carnivorous Tasmanian devil, Australia's creatures were identified and explained.

DISNEY: THE MUSIC BEHIND THE MAGIC

Organized by Experience Music Project, Seattle Washington. *Disney: The Music Behind the Magic* told the story of how Disney has used music to engage audiences, drive its timeless narratives and succeed in everything from cartoons, TV, theme parks and live-action films, to Broadway and the Billboard charts. Through hands-on, interactive activities, the exhibition explored and explained the connections between music and science in a whimsical way that the whole family could enjoy.

ORBIS PICTUS OR THE GATE TO THE WORLD OF CREATIVE HUMAN IMAGINATION

Ever played a water organ? A piano with aluminum rods instead of strings? A metallic sphere? *Orbis Pictus* gave visitors the chance to do all that and much, much more. A dazzling exhibition created by international artists and led by Czech visual artist Petr Nikl, *Orbis Pictus* featured whimsical machines of light, sound and music that didn't fit nicely into definitions of drums, horns or pianos.

CONTINUED OVER

CONTINUED FROM PREVIOUS

ACM MULTIMEDIA 2008, INTERACTIVE ARTS PROGRAM

Science World partnered with Simon Fraser University to present *ACM Multimedia 2008, Interactive Arts*. The exhibition presented multimedia art throughout the building from Canadian and international artists, including Amanda Steggell, Aleksandra Dulic, Kenneth Newby, Martin Gotfrit, Peter Knees, Tim Pohle, Yucef Merhi, Jinsil Seo, Greg Corness, Hiroki Kobayashi, Ryoko Ueoka, Michitaka Hirose, Geoffrey Shea, Pamela Jennings, Yuri Choi, Alan Dunning, Julie Andreyev and John Cayley.

FOSSILS, FINS AND FANGS: DINOSAURS AND OTHER ANCIENT LIFE

It isn't often that you get to explore real fossils up close and personal, but that's exactly what Science World's visitors were able to do this year during *Fossils, Fins and Fangs: Dinosaurs and Other Ancient Life*. Featuring real fossils of Edmontosaurus and Platecaropus skeletons, a Triceratops skull and fossilized fish, eggs and plants, the exhibition was a sight to behold. The exhibition also introduced visitors to STAN, our cast of a T. rex skeleton, who has permanently joined us—in **Search: The Sara Stern Gallery**.

WHEELS, WINGS AND WAVES— A LEGO® WORLD OF TRANSPORTATION

This exciting exhibition showcased the history of ground, air and water transportation as seen through the eyes of LEGO builders. From the days of the Titanic ship to the days of spaceships, this was an innovative and interactive exploration of how changing technology has expanded our reach. As a special highlight, visitors during opening weekend were invited to help Robin Sather, a LEGO Certified Professional, in building a giant LEGO space shuttle.

LEGO and the LEGO logo are trademarks of the LEGO Group. © 2008 The LEGO Group.

WE CAN EXPLAIN

With Our Films & Presentations

Each year, Science World welcomes a selection of films, shows and presentations to showcase and explain a variety of topics. This year was no exception.

OMNIMAX® THEATRE

Mummies: Secrets of the Pharaohs
Dinosaurs Alive!
The Human Body
Pulse: A STOMP Odyssey
Grand Canyon Adventure: River at Risk
Australia: Land Beyond Time
The Alps
Extra-Large Shorts
Journey Into Amazing Caves
The Light Before Christmas
Roving Mars
A Rainforest Adventure: Bugs!

SCIENCE THEATRE

Creature Features Volume 2
Creature Features Volume 3
Planet Earth: Ice Worlds
Walking with Dinosaurs: Death of a Dynasty
Space: Staying Alive
Disney: The Music Behind the Magic—An Overview
Beavers: The Master Builders
Water Under Fire: The Rockies
At Home with Mrs. Hen
Ludovic: A Crocodile In My Garden
Nature Scopers: Look! What's Coming Out of the Seed
Nature Scopers: Amazing! The Transformation of Caterpillars
The English Alphabet
Zin! Zin! Zin! A Violin

We can explain.
learn more at
scienceworld.ca

Your eye muscles move 100,000 times a day.

With Our Special Events

Our special events allowed visitors to discover Science World in ways they might not otherwise get to, inside TELUS World of Science and across the province.

CRAZY CARNIVALE!

Featuring *Disney: The Music Behind the Magic*

What a dazzling evening! Over 780 people attended *Crazy Carnivale!* this year, raising close to \$50,000 to revitalise the electricity exhibit in the Our World Gallery. Our dedicated team of volunteers, led by Nicole Geyer, created another fantastic event.

Families enjoyed live music, street entertainers, karaoke, a parade, delicious food and more. There were even guest appearances from *Beauty and the Beast* to help ring in the opening of *Disney: The Music Behind the Magic*.

SCIENCE WORLD AFTER DARK

Science World at TELUS World of Science isn't just for kids—adults want to have fun too. That's the idea behind our always-popular *Science World After Dark* events, adult-only evenings of exploring, creating and discovering like little kids again.

This year, we offered several evenings of adult-sized fun and zany explanations, featuring special presentations and entertainment. In addition to a regular *Science World After Dark* evening in November, we hosted theme nights including *SWARM*, *The Creative Mind* and *Laws of Attraction*.

PYJAMA PARTIES

Kids and their parents were invited to wear their pyjamas, check out our exhibits, then snuggle in for a movie in the Science Theatre during our special pyjama parties this year. The evenings were wildly popular and a great way for families to spend their evenings discovering Science World at TELUS World of Science. Themes included *Princesses*, *Pirates*, *Under the Sea* and *North Pole*.

We can explain.
learn more at
scienceworld.ca

There are more chickens than humans on Earth.



JANE GOODALL speaking in Science Theatre in October of 2008.

TEACHER ORIENTATION EVENINGS

This year, over 368 teachers, pre-service teachers and community/program coordinators came to our Teacher Orientation Evenings. The evenings were held September 25, 2008 and February 5, 2009 and were a great chance to explain what we've got going on and how educators can get the most out of their field trips to Science World at TELUS World of Science.

Participants enjoyed presentations on our current offerings, explored our exhibits and immersed themselves in an OMNIMAX film. As always, our Community Engagement and Bookings staff were on hand to meet the guests and make sure no questions went unanswered.

A VISIT FROM JANE GOODALL ROOTS & SHOOTS

When Jane Goodall visited Vancouver in October 2008, she stopped by Science World at TELUS World of Science to meet with Roots & Shoots youth leadership groups from across B.C. Each group was able to present their work to Jane who was clearly impressed by their projects. They also got to watch *Jane Goodall's Wild Chimpanzees* in the Science Theatre and then hear Jane talk about her experiences studying the chimpanzees, explaining some of their behaviours and how critical it is to protect the animals and our environment.

WE CAN EXPLAIN

With Our Renovations

2008/2009 saw significant renovations completed inside our building. Our lobby was renovated—the floor was replaced, the walls were refinished and our main entry doors were replaced with automatic sliding doors. A new donor recognition system was also mounted in the lobby.

In addition to the lobby renovation, new carpet was installed throughout the rest of the first floor. Our gift shop got new flooring and fixtures, along with a new sign and a new name—Kaleidoscope. As well, around the atrium on the second floor, we installed a glass railing to open and brighten the lobby space.

Work was also started on several other projects that will continue on in 2009/2010. The renovations will ensure Science World at TELUS World of Science continues to be fresh and exciting.



WE CAN EXPLAIN

With Our Outreach Programs

To build communities that understand, value and celebrate the contribution of science and technology to our quality of life, Science World provides opportunities for children, teachers and families to be turned on to science at school, at home and in the community. Our Community Outreach programs travel throughout British Columbia, involving whole communities and accommodating a diversity of learners, cultures and family interactions.

In 2008/2009, our mobile programs reached over 188,000 British Columbians. K–9 students accounted for over 76 per cent of our interactions.

This year, our programs also included a new contest in partnership with the Province of British Columbia, *BC Green Games*. Through the contest, B.C.'s youth showed their eagerness to take on a leadership role in creating a greener future for us all.

Thanks to sponsors, supporters, community partners and the continued multi-year support from the Province of British Columbia through the Ministry of Education for the BC Program for the Awareness and Learning of Science (BC PALS), geographic and financial barriers are significantly reduced, making it possible for us to provide equal access to all B.C. students.

COMMUNITY SCIENCE CELEBRATION

Entire communities are mobilized to celebrate and share the wonders of science.

These week-long series of entertaining and engaging events bring Science World together with local industries, businesses, government agencies, schools and community organizations to promote the role of science and innovation in communities across the province. Working with community partners in Campbell River, Castlegar, Fort St. John, Kelowna and Terrace, we inspired over 11,700 students, families and community leaders to discover the science all around them. The events help foster relationships with community organizations and set the stage for ongoing science activities in communities. Students are inspired to keep studying and to explore future careers in science and technology.

ENGAGING SCIENCE

Elementary teachers jumpstart their science units with engaging, hands-on activities.

In partnership with the Vancouver Aquarium and the H.R. MacMillan Space Centre, this program matches all three content areas of B.C.'s science curriculum: Life Science, Physical Science and Earth & Space Science. This year, *Engaging Science*, through professional enrichment workshops, university credit courses, online games, conferences and resources, shared our innovative, hands-on approach to teaching science with over 900 teachers and student teachers throughout the province.



ON THE ROAD

K-7 students and teachers are inspired to do more science in their own school.

Through *Science World On the Road*, students experience three amazing shows: *Energy in Action*, *What's That Sound?* and *Real "Live" Science*. The shows explore science topics such as forms of energy, the basics required by all living things and the sounds of bodily functions—all in a zany, creative way.

In 2008/2009, *On the Road* travelled throughout the province delivering exciting, innovative and curriculum-relevant science shows to over 26,000 K-7 students and teachers. The *On the Road* team also visited family festivals and celebrations around the province, reaching over 28,000 people. From Burns Lake to Lazo, no community was too remote to be inspired by science.

OPENING THE DOOR

High school students network with Canada's top scientists, engineers, technologists and technicians.

Opening the Door career networking events provide a unique opportunity for high school students to learn more about career opportunities in science, technology, engineering and mathematics by connecting the students with local, well-established science leaders. In 2008/2009, over 800 students had the opportunity to network with 145 science professionals throughout the province.

This year, Science World launched *Health Science Dissected*, a full day of health-focussed programming for senior high school students. In the morning, students heard about leading medical research through talks by Gairdner Award winners Dr. Gary Ruvkun and Dr. Alan Bernstein. In the afternoon, students networked with a variety of local health professionals, ranging from a registered nurse to a neuroimaging specialist.

SCIENTISTS & INNOVATORS IN THE SCHOOLS

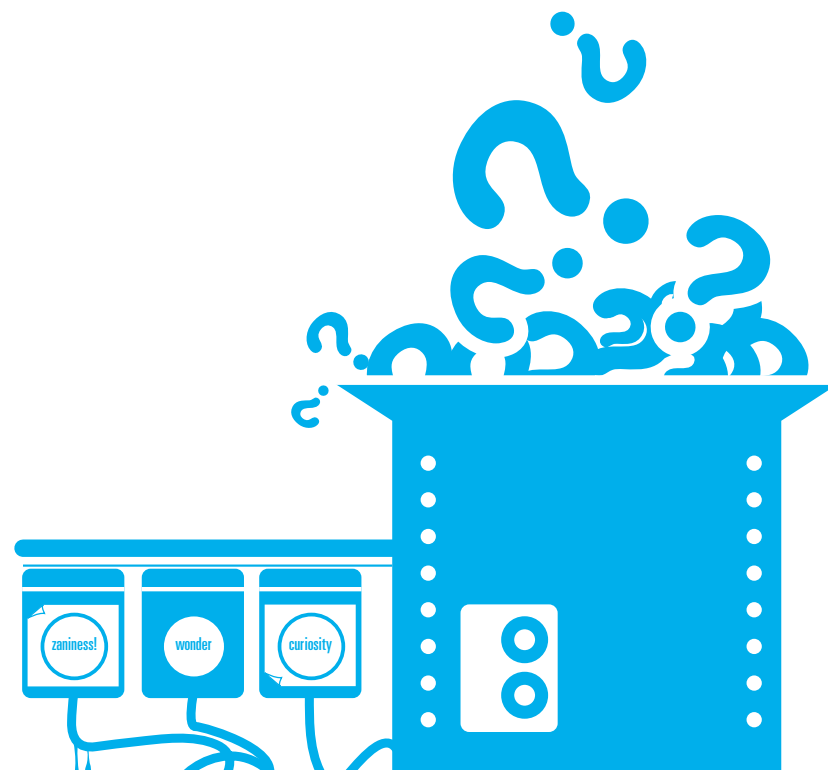
K-12 students are inspired by local science professionals in their own classrooms.

This free program connects established scientists, engineers, technologists, technicians and tradespeople with B.C.'s students and teachers to inspire students to continue studies in math and science. In 2008/2009, *Scientists & Innovators in the Schools* delivered presentations and hands-on workshops to over 70,000 K-12 students and teachers across the province.

SUPER SCIENCE CLUB

Inner-city youth are inspired to be more inquisitive about the world around them.

September 2008 marked the beginning of the eighth year of this fun-filled, after-school science enrichment program inspiring over 590 at-risk children. The program takes science engagement beyond the after-school time period by including resources and professional enrichment activities for teachers, *Discovery Notebooks* for sharing at home and family memberships to Science World at TELUS World of Science. Each term, students and their families look forward to the culminating Family Science Night events. These unique evening events, attended by 600 people annually, allow our *Super Science Club* participants to explore our galleries, experiment with hands-on activities, enjoy dinner and immerse themselves in an OMNIMAX film.





TEEN AUDIENCE

Capture teen energy and interest to support and inspire positive attitudes towards science during critical career decision-making years.

To thoughtfully explore how to better connect with the underserved teen audience, a teen programming strategy and roadmap for audience expansion was developed to guide us as we grow our offerings for and change our relationship with teens. In 2008/2009, we reached over 13,000 teens with a variety of programs, events and partnerships that include youth leadership conferences, hands-on workshops, Community Outreach programs and high school work experience opportunities at TELUS World of Science.

BIG SCIENCE FOR LITTLE HANDS

Fostering curiosity, imagination and a positive attitude towards science in preschool-aged children is a priority for Science World.

To better serve B.C.'s preschoolers and their teachers, parents and caregivers, our early childhood programming was reorganized and significantly expanded this year with a special focus on StrongStart BC Centres and surrounding communities. Offerings include four resource modules developed and tested in the community, hands-on professional enrichment workshops for educators and resources and activities for parents and their preschool-age children, reaching over 650 people around the province. Our resources and approach support the learning goals outlined in the BC Early Learning Framework in the areas of Exploration and Creativity.

BC GREEN GAMES

Share, celebrate and reward green actions from B.C.'s students.

In 2008/2009, Science World introduced *BC Green Games*, a new province-wide eco-action contest from Science World and the Ministry of Education, Green Schools Division. The contest motivates action, enables sharing and rewards and celebrates the green efforts of schools in the province.

Designed in collaboration with the North Vancouver and Richmond School Districts and the Environmental Education Provincial Specialists Association, the first year of *BC Green Games* was a great success. Schools learned from and inspired each other across communities all over the province, showing the commitment of B.C.'s youth to creating a sustainable future. *BC Green Games* attracted 140 schools from 35 school districts and offered \$50,000 in prizes to B.C.'s schools.

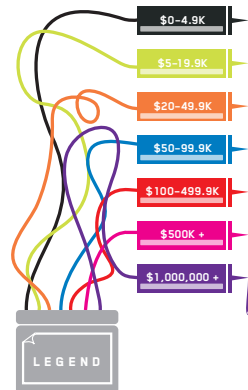
A sneeze can travel at 65 km/h.

We can explain.
Learn more at
scienceworld.ca

With Our Sponsors & Donors

- Anonymous (10)
- Boyle & Eike Ahlborn
- William Alexander & Linda De Luca
- Trish & Hannes Barnard
- BC Climate Action Secretariate
- BC Hydro
- R.C.I. Beattie
- Barbara Brink C.M., O.B.C.
- Kunlaya Brydges
- Ian Bullen
- Alex Campbell
- Florante & Norma Catalan
- Cheng-Hsiung Chang
- Philip Chow
- City of Vancouver
- Coca-Cola Bottling Ltd.
- Commonwealth Insurance Company
- CopperLeaf Technologies Inc.
- Wanda Costuros
- Day4 Energy Inc.
- Deloitte & Touche LLP
- Direct Access Program Grant
- Helen & Clive Dixon
- Elizabeth M. Dodds
- Bruce Drake
- Dyson Canada Ltd
- Tricia Edgar
- Estate of Gordon Anderson Hall
- Galdos Systems Inc.
- Gaming Policy and Enforcement Branch
- Paul & Nicole Geyer
- Andrew & Nora Harmsworth
- David Harvie
- Kory Hurst
- Daryl M. Hutchings
- David Ingram
- Clark Jackisch
- Caroline Jellinck & Gordon Exel
- Cheryl and Randy Jespersen
- Ketchum Canada Inc.
- Stewart Ladyman
- Ingrid Lae
- Gordon Leask
- Keith Lee
- Ken Lee
- Michael L. Lee
- Stephen Lewis
- Peter Lige
- Lohn Foundation
- Robin & Linda Louis
- Lindsay Machan
- Pam & Munro MacKenzie
- Peter & Jacqueline Manley
- Grant McCormack

- Patsy McMillan
- Bill Mitchell
- Ed & Penny Moul
- Diana Movold
- Heather Neilson
- Peter O'Callaghan
- On Demand Production Network
- Donna O'Neill
- Booth Palmer
- Kerry Peacock
- Alan Pelman
- Meg Penafiel
- Roger Phillips
- Jim Pickles
- Mark Pillon
- PNG Enterprise Foundation
- Jane Richardson
- James E. Walsh and Karen Robinson
- Don & Belinda Safnuk
- Debbie Salkind
- Dr. Ken Spencer & Judy Gale
- Sport Chek
- Morgan & Lisa Sturdy
- Catherine Takemori
- Claude Tani
- TD Bank Financial Group
- Teekay Shipping (Canada) Ltd.
- TELUS Corporation
- TransCold Distribution Ltd.
- Virginia Tiwad
- Donald M. Topp
- Graeme Trigg
- Debbie Umemura
- Anonymous
- United Way of Greater Toronto
- VanCity Credit Union
- Karen Vlug
- Bob & Carol Wiens
- Thomas C. Wong, Michelle Kwok & Danirelle Kwok
- Dr. Edward Yeung & Mrs. Eugenie Yeung
- Don Young
- Hugh Zhu



COMMUNITY ENGAGEMENT

Science World is committed to promoting a science-friendly culture throughout the province by actively engaging the whole community—students, teachers and families—in the students' learning. Through the British Columbia Program for the Awareness and Learning of Science (BC PALS), Science World is able to provide every K-7 class throughout the province with one complimentary Science World experience every year.

BRITISH COLUMBIA PROGRAM FOR THE AWARENESS AND LEARNING OF SCIENCE (BC PALS)

- Province of B.C. through the Ministry of Education

BIG SCIENCE FOR LITTLE HANDS

- Teresa Breck
- Province of B.C. through the Ministry of Education

BC GREEN GAMES

- Living Water Smart: B.C.'s Water Plan
- Province of B.C. through the Ministry of Education
- SolarBC
- TELUS Vancouver Community Board

ON THE ROAD

- BC Hydro
- Spectra Energy

COMMUNITY SCIENCE CELEBRATION

- Suncor Energy Foundation

SUPER SCIENCE CLUB

- BC Hydro
- City of Vancouver
- Mike Cormack & Jenny Drake
- Diamond Foundation
- Juniper Networks Foundation Fund
- North Growth Foundation
- RBC Foundation
- Science World Visitors
- Willow Grove Foundation

COMMUNITY ENGAGEMENT VEHICLE SPONSOR

- Honda Canada Foundation

You get taller in space.

We can explain.
learn more at
scienceworld.ca

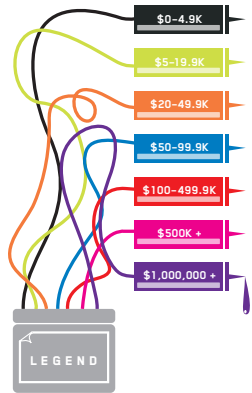
REGENERATION

OUTDOOR SCIENCE EXPERIENCE AND BUILDING RENEWAL

Science World has embarked on a capital campaign to remain at the forefront of science education in British Columbia by creating an outstanding visitor experience, both under the dome and through a new major outdoor science exhibition.

- Province of British Columbia
- Canada-British Columbia Infrastructure Program
- Western Economic Diversification Canada
- EnCana Corporation
- Peter & Joanne Brown Foundation
- TD Bank Financial Group
- Imperial Oil Foundation

- Canadian Natural Resources Limited
- CANTEST Ltd.
- Carthy Foundation
- Shira Druker
- Gage-Babcock
- Hemmera
- Hub International TOS Limited
- Brenda Jebson
- Cheryl and Randy Jespersen
- Mrs. Sam Ketcham
- Klohn Crippen Berger Ltd.
- William Lang
- Lehigh Northwest Cement Limited
- Levelton Consultants Ltd.
- Quantum Environmental Group
- Sandwell Engineering Inc.
- Stantec
- Terasen Gas Inc.
- Vancouver Foundation
- Greg & Melissa Weinrauch



Spider silk is stronger than steel.

We can explain.
learn more at
scienceworld.ca

SEARCH: THE SARA STERN GALLERY

Thanks to generous community support, *Search: The Sara Stern Gallery* will have a new look in March 2009.

- Western Economic Diversification Canada
- Ronald & Janet Stern
- Windsor Plywood
- Paul & Nicole Geyer
- Finning International Inc.
- John Murphy & Leslie Lee
- The Highbury Foundation
- The Hamber Foundation
- Connor, Clark & Lunn Foundation
- Peter & Sara Pacholko
- Scott Hill
- Dr. Ken Spencer & Judy Gale
- Roger & Susan Holland
- Sean Lunde
- Anonymous
- White Spot Restaurants
- Grace Upshall
- Charlie Tsang
- Bryan & Kathlyn Tisdall
- Rose Terzariol
- Peggie Terry
- Suan Teo
- TELUS Corporation
- Science World Employees
- Pinton Forrest & Madden Group Inc.
- Peter Moore
- Neil Menzies
- Pam & Munro MacKenzie
- Michael L. Lee
- Ingrid Lae
- Barry & Beth Gibson
- Warren Erhart
- BC Innovation Council
- Brian Baker
- Ascent Public Affairs Inc.

FEATURE EXHIBITION:

WHEELS, WINGS AND WAVES— A LEGO® WORLD OF TRANSPORTATION

- YVR—Vancouver Airport Authority
- Stantec
- SNC Lavalin Inc. (Vancouver)

FEATURE EXHIBITION:

FOSSILS, FINS AND FANGS: DINOSAURS AND OTHER ANCIENT LIFE

- Maynards Industries Ltd.

OUR WORLD GALLERY: ENERGY EXHIBIT

- BC Hydro

OUR WORLD GALLERY: WATER EXHIBIT

- The Hamber Foundation

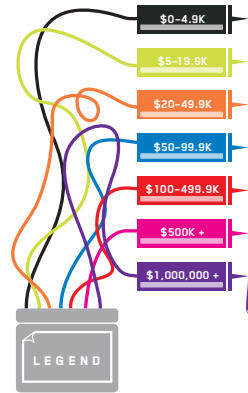
SPECIAL EVENT:

CRAZY CARNIVALE!

- BC Hydro

Crazy Carnivale! was also supported by:

TELUS, James H. Dehoney & Associates, Imperial Parking and Zeugma Systems Inc.



THE CHAIR'S CLUB

The Chair's Club hopes to build a group of influential business leaders with the passion and capacity to pave the way for a truly world-class science centre that will inspire the young innovators of this province for years to come. Their individual commitment of \$25,000 annually for three years is how we'll start.

Paul & Nicole Geyer
Abdul & Hanifa Ladha
John & Dana Montalbano
Dr. Andrew S. Wright & Dr. Helen Newton
—Willow Grove Foundation

THE CHAMPIONS CIRCLE

With a remarkable contribution of \$5,000 per year for a three-year period, this group of passionate community leaders are dedicated to helping Science World inspire young minds throughout the province.

- | | |
|----------------------------------|---|
| Anonymous (2) | Kerry Peacock |
| Greg Aasen | Greg & Marlyn Peet |
| Peter & Fran Briscoe | Maria Pinelli & Paul Fletcher |
| Cathy & George Brown | Eric K. Pringle, Hemmera |
| Jim & Wendy Charlton | The Rajani Family |
| Bart & Cindi Copeland | Ian & Viviane Reid |
| Kerry & Paula Curtis | Don & Belinda Safnuk |
| Phil Dubois | Bijan & Heather Sanii |
| Haig & Mary Farris | Walter & Nancy Segsworth |
| Norm & Pat Francis | Garry & Colleen Shearer |
| Robert Fung and Family | Rich & Linda Kathleen Simons |
| The Galbraith Family | The Sisodraker Family |
| Paul & Nicole Geyer | Stephen Sorensen |
| Andrew Harries & Family | Keith, Sheryl, Bridget & Virginia Spencer |
| Nancy Harrison & Paul Buitenhuis | Dr. Ken Spencer & Judy Gale |
| Kevin & Patricia Huscroft | Spothelfer Family |
| Doug & Jacqueline Janzen | Morgan & Lisa Sturdy |
| Caroline Jellinck & Gordon Exel | David & Gaylean Sutcliffe |
| Sherry & Alex Klopfer | Ron & Shannon Thiessen |
| Eric & Jaye Kong | Bill & Bronwen Thomas |
| Abdul & Hanifa Ladha | Praveen & Anuja Varshney |
| Lily & Robert H. Lee | Laurie & Lily Wallace |
| Robin & Linda Louis | Doug Whitehead & Wanda Costuros |
| Lindsay Machan | Lorne Whitehead |
| Dan & Stephanie McCallum | Harald Will Family |
| Dr. Jim McEwen | Chip & Shannon Wilson Family |
| Bruce Mcleod | Dr. Andrew S. Wright & Dr. Helen Newton— |
| Dr. Jim Miller | Willow Grove Foundation |
| Ross Mitchell | Deb & Jim Yeates |
| David Mullen & Georgia Evans | Len Zapalowski & Laura Carter |
| John Murphy & Leslie Lee | Chaya, Leith, & Sam |



EQUITY GIVING PROGRAM

By supporting Science World through gifts of common shares, stock options or pledges of equity security, B.C. companies and their investors share their success with Science World while investing in the innovators of tomorrow.

CORPORATIONS

Active State Software Inc.
 Aquinox Pharmaceuticals Inc.
 Bean Services Inc.
 Burrard Technologies Corporation
 Bycast
 Cardiome Pharma Corp.
 CFA Sports Inc.
 CineClix Distribution Inc.
 Colligo Networks, Inc.
 Concursion Technologies Inc.
 Condition30 Inc.
 Connection Point Systems Inc.
 Connectus Direct Solutions Inc.
 Delta-Q Technologies Corp.
 Elastic Path Software Inc.
 Eyeball Networks Inc.
 FinancialCAD Corporation
 GaleForce Solutions Inc.
 Icron Technologies Corp.
 IDELIX Software Inc.
 IgnitionPoint Technologies Corp.
 In Motion Technology Inc.
 Indel Therapeutics Inc.
 Layer 7 Technologies Inc.
 LightHaus Logic Inc.
 Madesco Technologies Inc.
 MAKE Technologies Inc.
 Marqui Inc.
 MIGENIX Inc.
 Mobile Operandi Communications Corp.
 Neltura Technology, Inc.
 Neovasc
 Parasun Technologies Inc.
 Peerflix Inc.
 Productivity Design Tools Inc.
 Redlen Technologies Inc.
 ResponseTek Networks Corp.
 RewardStream Inc.
 Scorpion Software
 SilverTip Marine Inc.
 Sirius Genomics Inc.
 SoftSearch Inc.
 SolutionStack Technologies
 Strutta
 Urodynamix Technologies Ltd.
 Velo Investments Ltd. & Velo Ventures (VCC) Inc.
 Voice Mobility Inc.
 W Media Ventures
 Wolf Medical Systems Corp.
 Working Opportunity Fund, managed by
 GrowthWorks Capital Ltd.

INDIVIDUALS

David Ascher
 Jason Billingsley
 Glenn Bindley
 Moira & Barry Carlson
 Harry Chemko
 Bart & Cindi Copeland
 Dr. & Mrs. James M. DeMesa
 Kelly Edmison
 Todd Hamel
 Daryl Hatton
 C. Mathew Herdon
 Jeff Hobbs
 Sibylle Tinsel & Ean Jackson-CFA Sports Inc.
 Malcolm and Jennie Kendall
 Dave Koo
 Jeff LaPorte
 Kevin Lee
 John Lieu
 David J. Main
 Ian A. McEachern
 John McLeod
 Robert Park
 Eric Promislow
 Colin Quon
 Jeremy Ralph
 Bob and Judy Rieder
 Dan Robinson
 Garry & Colleen Shearer
 Rich & Linda Kathleen Simons
 Suresh Singh
 Victor Sira
 Keith, Sheryl, Bridget & Virginia Spencer
 Dr. Ken Spencer & Judy Gale
 Peter Steele
 Morgan Sturdy
 Bill Tam
 Mark Williams
 Boris Wertz

EMPLOYEE GIVING CAMPAIGN

With a matching gift from Board of Directors Chair, Paul Geyer, Science World employees and volunteers showed their dedication to our mission by raising over \$20,000 towards our exhibits and community engagement programs.

■ Brian Anderson
 ■ Carolina Becerra
 ■ Tina Betson
 ■ Hilda Britton
 ■ David Butler
 ■ Karlo Catalan
 ■ Trudi Coblentz
 ■ Jo-Ann Coggan
 ■ Jeff Connor
 ■ Christina Coomer
 ■ Jana Curl
 ■ Ivan Decker
 ■ Amber Didow
 ■ Andreas Dracopol
 ■ Marc Ducharme
 ■ Sandra Eix
 ■ Pamela Findling
 ■ Pauline Finn
 ■ Iain Fraser
 ■ Caroline Fung
 ■ Avena Guppy
 ■ Julio Guzman
 ■ Clyde Hagans
 ■ Ryan Hauser
 ■ Kate Henderson
 ■ Anna Horvath
 ■ Lap W. Hum
 ■ Kevin Kearns
 ■ Rhoda Klein
 ■ Ingrid Lae
 ■ Gloria Laird

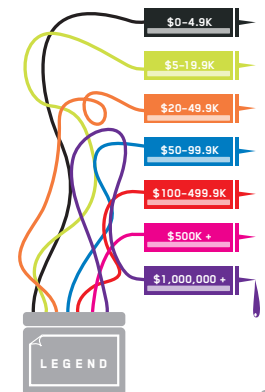
■ Suki Law
 ■ Leonard Liau
 ■ Sean Lunde
 ■ Tammy Matheson
 ■ David Butler
 ■ Margot McLaren
 ■ Dale Minchin
 ■ Carl Ott
 ■ Paul & Nicole Geyer
 ■ Stephanie Puleo
 ■ Jamie-Leigh Sager
 ■ Yukiko Stranger-Jones
 ■ Suan Teo
 ■ Melissa Thompson
 ■ Bryan & Kathlyn Tisdall
 ■ John Turner
 ■ Cindy Wagner
 ■ Greg & Melissa Weinrauch
 ■ Deanna Wiebe
 ■ Anteneh Wondimu
 ■ Cathy Yamamoto
 ■ André Zandstra


WE'D LIKE TO THANK THE FOLLOWING PARTNERS FOR THEIR GENEROSITY:

TransCold Distribution Ltd.
 Coca-Cola Bottling Ltd.
 Rethink Communications
 EventCorp Services Inc.
 Multigraphics
 Purdy's Chocolates
 R.E. Stirling

Mosquitoes love the colour blue.

We can explain.
 learn more at
scienceworld.ca





SCIENCE WORLD
TELUS World of Science
1455 Quebec St.
Vancouver, BC
Canada V6A 3Z7
scienceworld.ca

Science World British Columbia is a non-profit organization which engages British Columbians in science and inspires future science and technology leadership throughout our province.